

# GROOVED END SWING CHECK VALVE

## MODEL LVCVGG-400



### DESCRIPTION:

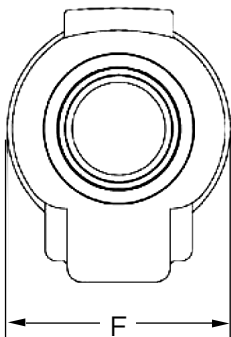
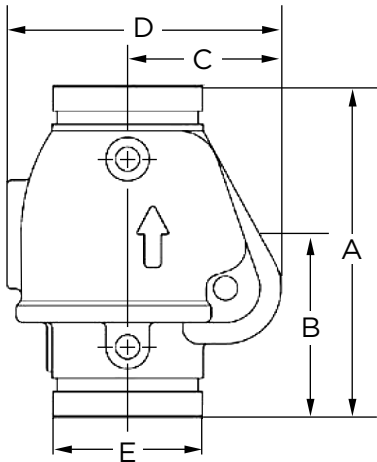
The LVCVGG-400 Grooved End Swing Check Valve is engineered for reliability and efficiency in fire protection systems. It is designed to be installed in either horizontal or vertical lines with upward flow, offering versatility in various installation scenarios. The valve features a low pressure drop and is easier and faster to maintain and install compared to traditional valves.

### KEY FEATURES:

- **Leak-Tight Sealing:** Equipped with an EPDM non-stick rubber ring for reliable, leak-tight sealing corrosion resistance: All wetted parts are made from stainless steel, providing superior corrosion resistance.
- **Durable Coating:** Both the interior and exterior surfaces are coated with a fusion-bonded coating that meets or exceeds the AWWA C550 Standard
- **Pressure Rating:** Rated for 400 PSI across all sizes
- **Certification:** UL Listed and FM Approved for safety and reliability in fire protection applications

### MATERIAL SPECIFICATIONS:

- **Body:** Ductile Iron (ASTM A536)
- **Seat Ring:** Brass (ASTM C37700)
- **Clapper:** Stainless Steel (ASTM A240)
- **Rubber Ring:** EPDM
- **Spring:** Stainless Steel (ASTM A240)
- **Hinge Pin:** Stainless Steel (ASTM A240)



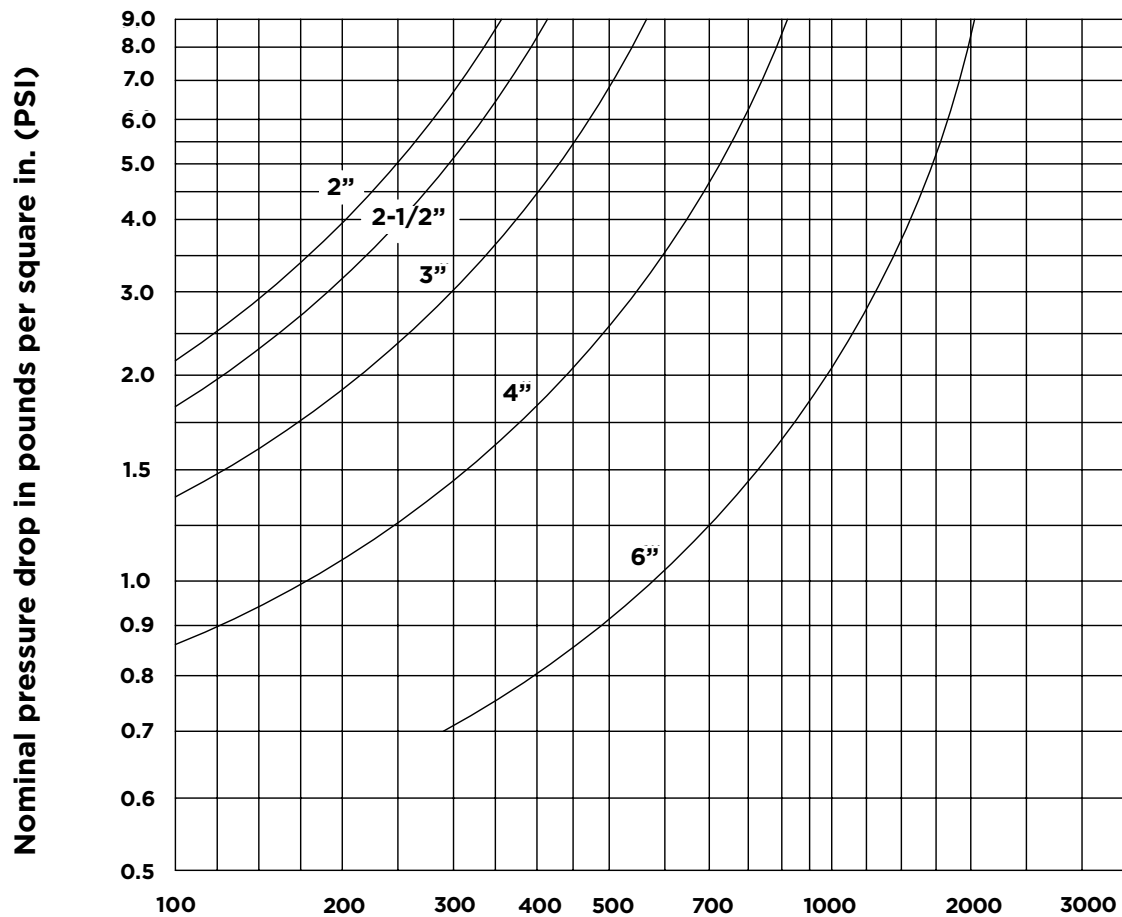
DIMENSIONS								
Nominal Valve Size (In.) (DN)	Pipe OD (In.)	Nominal Dimensions (In.)						Weight (Lbs.)
		A	B	C	D	E	F	
2	2.37	6.34	3.54	2.80	5.02	2.37	4.21	6.24
2-1/2	2.88	7.06	3.91	3.19	5.71	2.87	4.74	8.80
3	3.5	7.80	4.29	3.61	6.44	3.5	5.24	13.23
4	4.5	8.62	4.06	4.25	7.71	4.50	6.49	19.84
6	6.63	10.38	5.12	5.43	9.56	6.63	8.00	37.48

# GROOVED END SWING CHECK VALVE

MODEL LVCVGG-400



**Friction Loss Grooved End Swing Check Valve (Water at 65°F)**



**Flow rate in gallons per minute (GPM)**

PROJECT		APPROVAL STAMP
PROJECT:		<input type="checkbox"/> APPROVED
ADDRESS:		<input type="checkbox"/> APPROVED AS NOTED
ENGINEER:		<input type="checkbox"/> NOT APPROVED
SUBMITTAL DATA:		REMARKS:
NOTES 1:		
NOTES 2:		