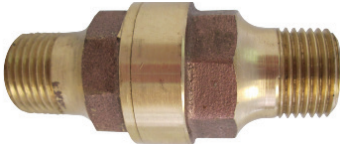


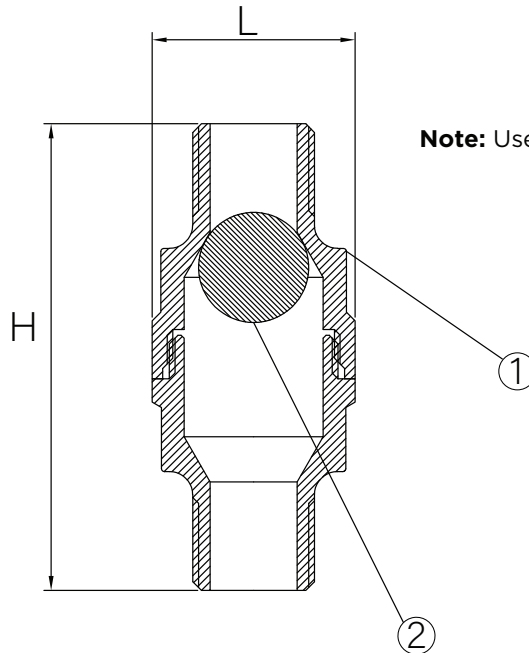
BALL DRIP VALVE

MODEL LVBD



FEATURES:

Ball Drips feature a bronze construction. Prevents moisture accumulation on 'dry' side of FDC when used with an approved check valve.



NO.	NAME	MATERIAL	SPEC. ASTM
1	Body	Cast Brass	B584 C85700
2	Ball	Brass	B124C37700

PART #	SIZE	H	L
700-150-00060	1/2" IPS	3.15"	1.40"
700-150-00060	3/4 IPS	3.15"	1.40"

PROJECT		APPROVAL STAMP
PROJECT:		<input type="checkbox"/> APPROVED
ADDRESS:		<input type="checkbox"/> APPROVED AS NOTED
ENGINEER:		<input type="checkbox"/> NOT APPROVED
SUBMITTAL DATA:		REMARKS:
NOTES 1:		
NOTES 2:		