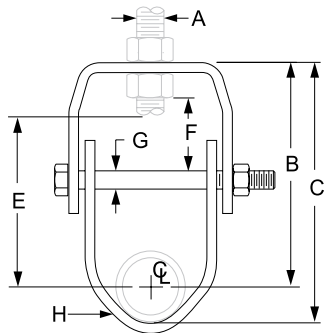


# LANSDALE

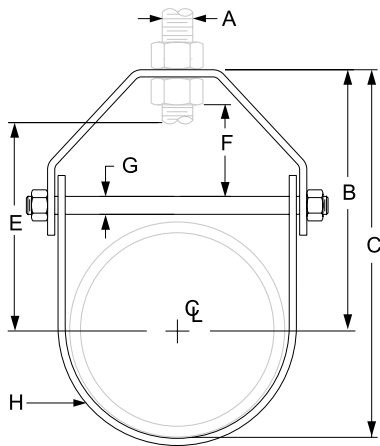
## VALVE & MANUFACTURING

www.breccocorp.com

# Clevis Hanger



Pipe Size 1/2" to 3/4"



Pipe Sizes "1 and Larger

FIG. 260: LOADS (LBS) • WEIGHTS (LBS) • DIMENSIONS (IN)

FIG. 260: LOADS (LBS) • WEIGHTS (LBS) • DIMENSIONS(IN)											
Pipe Size	Max Load	Span Ft.	Weight	Rod Size A	B	C	Rod Take Out E	Adjust. F	G	H Width Lower	
½	610	7*	0.34	¾	2⅞	2⅞	1½	⅝	¼	1	
¾			0.34		2		1⅝				
1	730		0.35		2⅞	3	1⅝				
1¼			0.40		2⅝	3¼	1⅞				
1½		9*	0.45	2⅜	3⅜	2⅝	⅞				
2		10*	0.50	3⅞	4½	2⅝	1⅝				
2½	1,350	11*	0.65	½	4⅞	5½	3⅞	1⅞	⅜	1¼	
3		12*	0.85		4¾	6½	4⅞	1⅝			
3½	1,430	13*	1.10		5⅞	7⅞	4⅞	1⅞	⅜		1⅜
4		14*	1.51		5⅞	7⅞	4½	1⅞			
5	1,940	16*	1.70	⅝	6⅞	8⅞	5½	1⅞	⅜	1⅜	
6		17*	3.10		6⅞	10¼	5¾	1⅞			
8	2,000	19*	4.75	¾	8⅞	12⅞	7⅞	2	½	1⅞	

- Material: Steel
- Standard Finish: Galvanized
- Designed for suspending light stationery pipe and allowing for vertical adjustment
- UL Listed for 3/4" thru 4"
- Complies with Federal Specification WW-H-171E Type 12Riser

\*Manufactured By Kentsharp for Lansdale International

PROJECT INFORMATION	APPROVAL STAMP
Project:	<input type="checkbox"/> Approved
Address:	<input type="checkbox"/> Approved as noted
Contractor:	<input type="checkbox"/> Not approved
Engineer:	Remarks:
Submittal Data:	
Notes 1:	
Notes 2:	