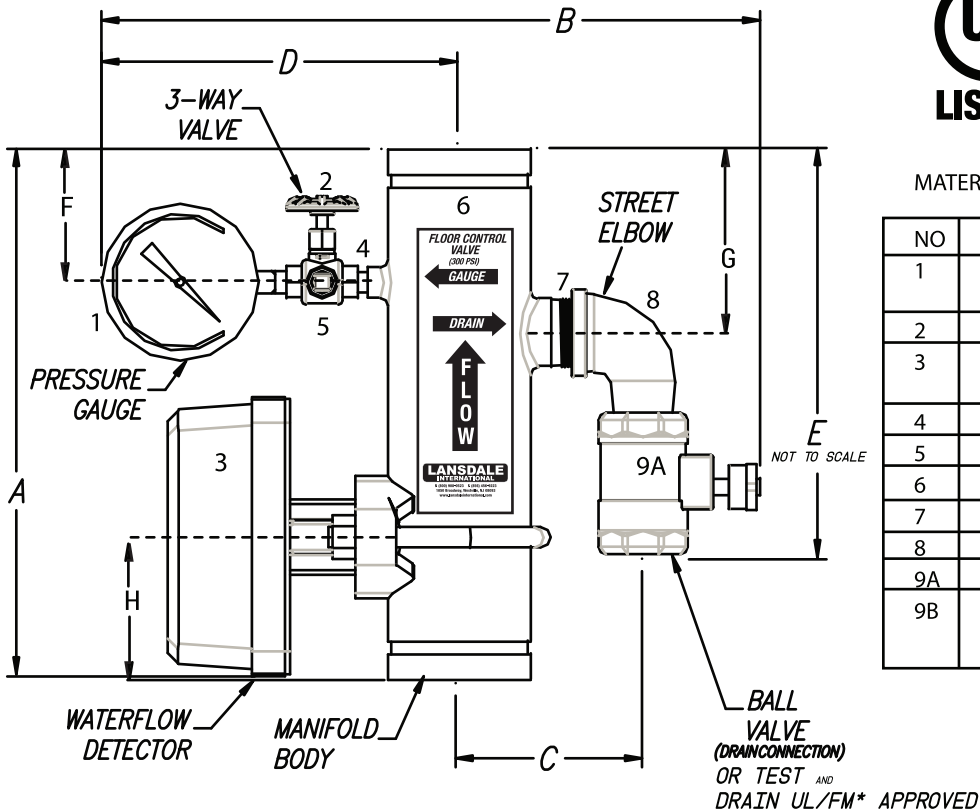


LANSDALE

VALVE & MANUFACTURING

www.lansdalevalve.com



Flow Test Assembly
EX15816
4DP2

MATERIAL LIST

NO	Description	Qty
1	LANSDALE AIR / WATER - 3-1/2" DIA 0-300 PSI w/ STAINLESS STEEL CASE UL & FM approved	1
2	1/4" 3-Way VALVE	1
3	System Sensor Water Flow Switch w retard UL/FM Approved	1
4	1/4 x 2 Black Nipple	1
5	1/4 Black CI Plug	1
6	Commercial Riser Body Sch 40 A53 Steel Pipe	1
7	Black Nipple _x close	1
8	Galvanized Street Elbow (90 degree)	1
9A	Ball Valve 300 PSI, 600 WOG UL/FM approved	1
9B	Lansdale International or equal, Test & Drain UL/FM Approved	1

(3" (80MM) VERSION SHOWN)

Nominal Size	2"	2.5"	3"	4"	6"
A	13"	13"	13"	13"	13"
B (Ball Valve)	13"	13 3/4"	15 3/4"	19 1/2"	20"
B (Test & Drain)	13 1/2"	14 1/4"	16 1/4"	19"	20 3/4"
C	5 1/4"	5"	5 1/2"	7"	8 1/4"
D	9 1/4"	9 1/2"	9 1/2"	10 3/8"	11"
E (Ball Valve)	5 5/8"	7 1/8"	9 7/8"	12 1/8"	13 1/2"
E (Test & Drain)	10"	10 1/4"	12 1/4"	14 3/4"	14 1/2"
F	3 1/2"	3 1/2"	3 1/2"	3 1/2"	3 1/2"
G	4 1/2"	4 1/2"	4 1/2"	4 1/2"	4 1/2"
H	3 1/2"	3 1/2"	3 1/2"	3 1/2"	3 1/2"

Body Size	2"	2.5"	3"	4"	6"
Ball Valve Size	1"	1.25"	1.25"	2"	2"
Test & Drain Size	1"	1.25"	1.25"	2"	2"

NOTE:

All tolerances (with exception of the grooves) plus or minus 1/4 of an inch.
All Welds to be 1/4" fillet surface prep of body - SSPC-SP-7 finished with 2.5 mils Bengal Red TGIC/ Acrylic Epoxy powder coat, electrostatically applied.

* AVAILABLE WITH PRESSURE RELIEF OPTION

PROJECT INFORMATION	APPROVAL STAMP
Project:	<input type="checkbox"/> Approved
Address:	<input type="checkbox"/> Approved as noted
Contractor:	<input type="checkbox"/> Not approved
Engineer:	Remarks:
Submittal Data:	
Notes 1:	
Notes 2:	