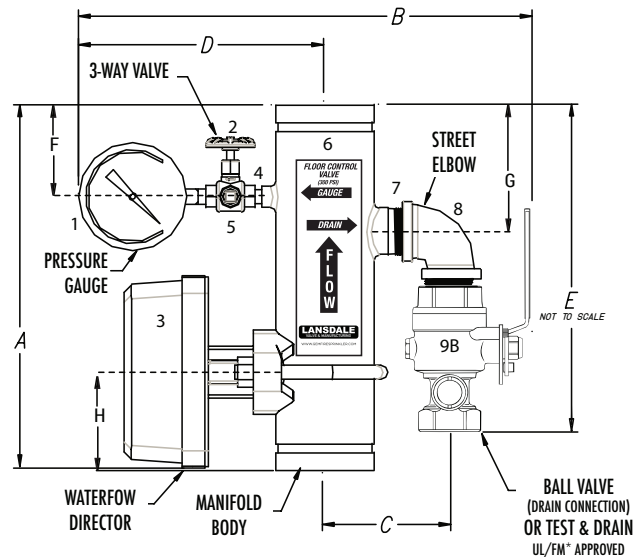
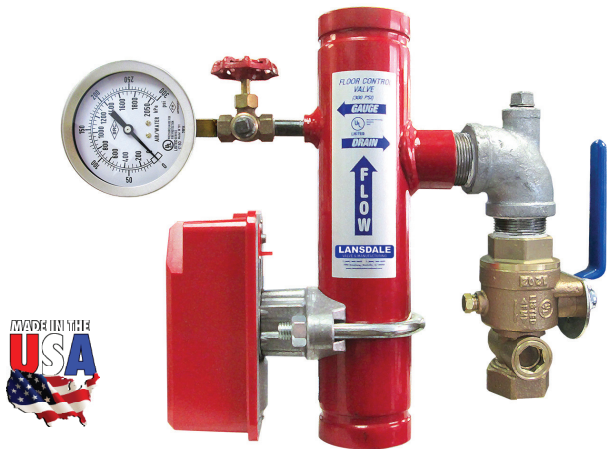




COMMERCIAL RISER VALVE

LVCRBV - BALL VALVE SIZE

LVCRTD - TEST & DRAIN



BODY SIZE	2"	2½"	3"	4"	5"	6"
BALL VALVE SIZE Model LVCRBV	1"	1¼"	1½"	2"	2"	2"
TEST & DRAIN SIZE Model LVCRTD	1"	1¼"	1½"	2"	2"	2"

NOMINAL SIZE	2"	2.5"	3"	4"	5"	6"
A	13"	13"	13"	13"	13"	13"
B (BALL VALVE)	13"	13¾"	15 ¾"	19½"	20 5/8"	20"
B (TEST & DRAIN)	13½"	14¼"	16¼"	19"	20 1/8"	20 ¾"
C	5¼"	5"	5½"	7"	7½"	8¼"
D	9¼"	9½"	9½"	10 3/8"	10 7/8"	11"
E (BALL VALVE)	5 5/8"	7 1/8"	9 7/8"	12 1/8"	13½"	13½"
E (TEST & DRAIN)	10"	10¼"	12 ¼"	14¾"	14 ½"	14 ½"
F	3½"	3½"	3½"	3½"	3½"	3½"
G	4½"	4½"	4½"	4½"	4½"	4½"
H	3½"	3½"	3½"	3½"	3½"	3½"

NO.	DESCRIPTION	QTY.
1	Lansdale Air/Water 3½" Dia. 0-300 PSI with/stainless steel case UL/FM Approved	1
2	¼" 3-Way Valve	1
3	Water Flow Switch with retard UL/FM Approved	1
4	¼ x 2 Black Nipple	1
5	¼ Black CI Plug	1
6	Commercial Riser Body Sch 40 A53 steel pipe	1
7	Black Nipple_x close	1
8	Galvanized Street Elbow 90°	1
9A	Ball Valve 300 PSI, 600 WOG UL/FM Approved	1
9B	Lansdale Valve & Manufacturing or equal Test & Drain UL/FM Approved	1

****NOTE:** All tolerances (with exception of the grooves) plus or minus ¼ of an inch. All welds to be ¼" fillet surface prep of body-SSPC-SP-7 finished with 2.5 mils Bengal Red TGIC/Acrylic epoxy powder coat, electro statically applied.

PROJECT		APPROVAL STAMP
PROJECT:		<input type="checkbox"/> APPROVED
ADDRESS:		<input type="checkbox"/> APPROVED AS NOTED
ENGINEER:		<input type="checkbox"/> NOT APPROVED
SUBMITTAL DATA:		REMARKS:
NOTES 1:		
NOTES 2:		