

LEVER & WEIGHT FLANGED SWING CHECK VALVE

MODEL LV-LWCV



DESCRIPTION:

Swing Check Valves are used to prevent the back-flow of water within a piping system. The Model LV-LWCV comes with an outside Lever and Weight which conforms to AWWA C508. In order for a check valve to properly function, there should be a differential pressure of at least ½ PSI, this will prevent water hammer and chatter.

FEATURES:

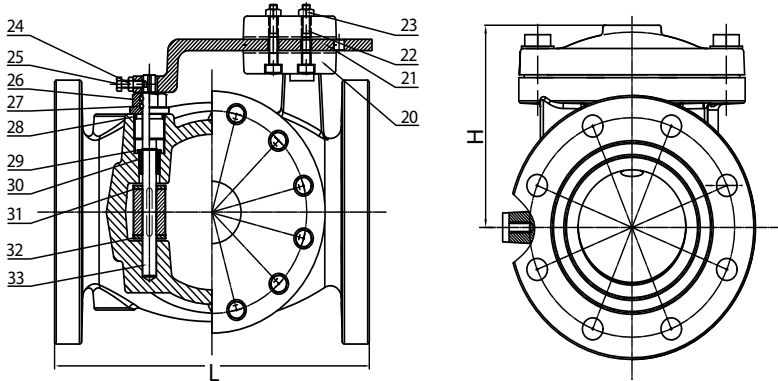
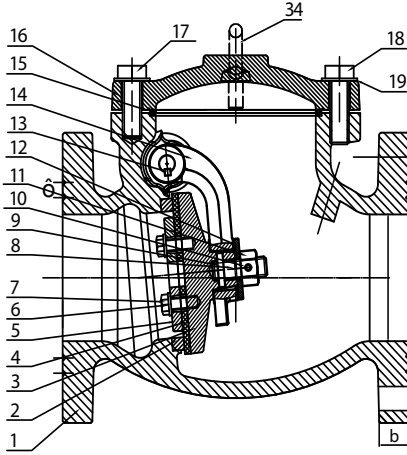
- Resilient seated (EPDM rubber face on the ductile iron disc)
- Bronze seat ring
- “Full Waterway” design per AWWA C508 Standard
- Fusion bonded epoxy powder coated - certified to NSF/ANSI-61 for use in drinking water systems
- Fusion bonded epoxy coated Interior and exterior per AWWA C550 Standard
- Working pressure rated at 300 PSI
- Flanged ends to ANSI B16.1, Class 125
- Temperature range: 33° F to 170° F
- May be installed vertically or horizontally for vertical installations, flow must be in upward direction
- Meets MSS-SP-71
- Spring Kits available
- ANSI/NSF61/372

INSTALLATION:

Upon receipt of the valves, inspect them for conformance to what was ordered, and any damage that may have occurred during shipment. Carefully inspect the valve disc and seating area for any damage and be careful not to have them come into contact with any tools during the installation process. This installation must be performed by experienced contractors, and in accordance with any local requirements as well as AWWA specifications including AWWA M-11, which requires proper support of the valve and associated piping.

LEVER & WEIGHT FLANGED SWING CHECK VALVE

MODEL LV-LWCV



VALVE DIMENSIONS					
SIZE (in.)	L	b	BOLTS NO./DIA	H	WT. (lbs.)
2-1/2	8.5	.75	4-.75"	6.18	48.27
3	9.5	.75	4-.75"	6.80	57.3
4	11.5	.95	8-.75"	6.91	76.75
6	14.0	1.0	8-.875"	9.35	147.82
8	19.5	1.12	8-.875"	10.73	264.93
10	24.5	1.20	12-1.0"	12.83	443.72
12	27.5	1.26	12-1.0"	14.10	602.77

MATERIAL SPECIFICATIONS		
NO.	PART	MATERIAL
1	Valve Body	ASTM A536 65-45-12
2	Seat	ASTM B62 C83600
3	Disc	ASTM A536 65-45-12
4	Disc Seat Ring	NBR
5	Retainer Washer	ASTM A536 65-45-12
6	Washer	AISI 304
7	Bolt	AISI 304
8	Stud	C95400
9	Roll Pin	AISI 304
10	Roll Pin	AISI 304
11	Nut	ASTM B62 C83600
12	Washer	ASTM B62 C83600
13	Flat Key	AISI 304
14	Clapper Arm	ASTM A536 65-45-12
15	O-Ring	NBR
16	Bonnet	ASTM A536 65-45-12
17	Bolt	AISI 316
18	Bolt	AISI 316
19	Washer	AISI 316
20	Weight	ASTM A536 65-45-12
21	Arm	WCB/ Spraying Plastics
22	Bolt	AISI 316
23	Nut	AISI 316
24	Nut	AISI 316
25	Bolt	AISI 316
26	Seat Nut	ASTM B62 C83600
27	O-Ring	NBR
28	Gasket	PTFE
29	Circlip	Carbon Steel
30	Shaft Sleeve Gland	ASTM B62 C83600
31	Washer	ASTM B62 C83600
32	Washer	ASTM B62 C83600
33	Hinge Pin	AISI 420
34	Eye Bolt	Carbon Steel

PROJECT		APPROVAL STAMP
PROJECT:		<input type="checkbox"/> APPROVED
ADDRESS:		<input type="checkbox"/> APPROVED AS NOTED
ENGINEER:		<input type="checkbox"/> NOT APPROVED
SUBMITTAL DATA:		REMARKS:
NOTES 1:		
NOTES 2:		