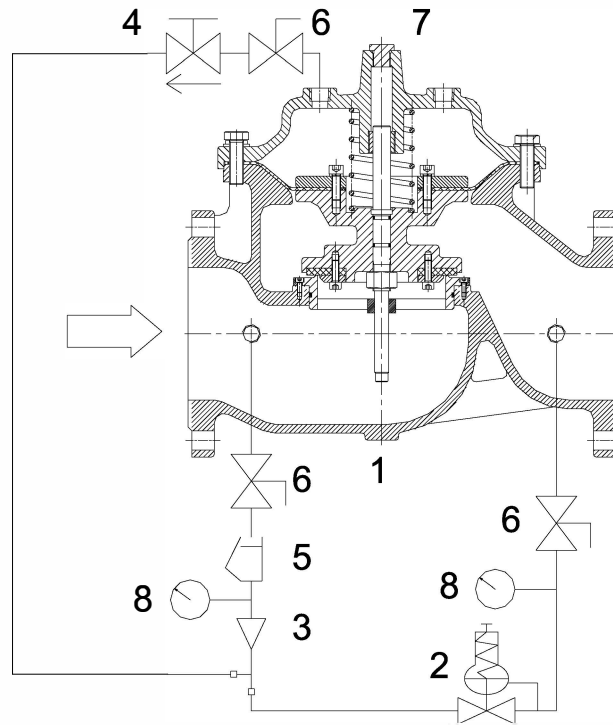


## Pressure Reducing Valve

FIG. LV1318

### Components Assembly Schematic



No.	Components
1	Basic Control Valve
2	Pressure Reducing Pilot
3	Ejector
4	Flow Control Valve
5	Y-Strainer
6	Isolation Ball Valve(optional)
7	Flow Control Valve
8	Pressure Gauge

### Operation

- The normally open spring loaded sensing downstream pressure responds to changes in pressure and causes the main to do the same
- The net result is a constant modulating action of the pilot and main to the downstream pressure constant
- The pilot system is equipped with an opening speed control that tunes the valve response to the system variables

#### Notes

- Designs, materials and specifications shown are subject to change without notice due to the continuous development of our products.