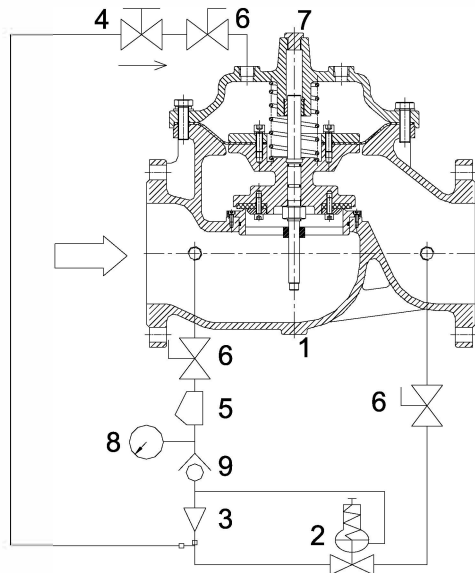


Pressure Relief Valve

FIG. LV1319



NO.	Components
1	Basic Control Valve
2	Pressure Relief
3	Ejector
4	Flow Control Valve
5	Y-Strainer
6	Isolation Ball Valve
7	Plug or Visual Indicator
8	Pressure Gauge
9	Check Valve

Recommended Installation

- Install the valve with adequate space above and around the valve to facilitate servicing. Refer to the Dimensions Table
- Valve should be installed with the bonnet (cover) at the top particularly 8" (DN200) and any valve with limit switch
- Shut-off valves should be installed upstream and downstream of the control valve. These are used to isolate the control valve during startup and maintenance
- Install a pressure gauge upstream of the valve to enable adjustment to the required pressure setting. This gauge may be installed in the upstream side port of the valve body

Operation

- The normally open spring loaded sensing downstream pressure responds to changes to changes in pressure and causes the main to do the same
- The net result is a constant modulating action of the pilot and main to the downstream pressure constant
- The pilot system is equipped with an opening speed control that tunes the valve response to the system variables

Notes

- *Designs, materials and specifications shown are subject to change without notice due to the continuous development of our products.*