

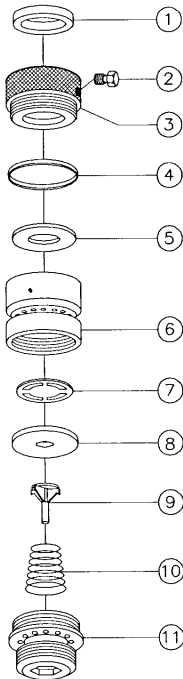
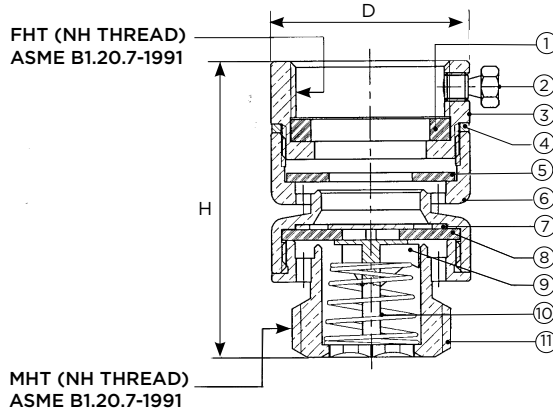
# NO LEAD AUTOMATIC SELF DRAINING VACUUM BREAKER

## MODEL LVVBASDNL



### FEATURES:

- No lead brass
- Temperature rating 180°F
- Pressure rating 125 PSI
- ASSE 1011 Approved



| NOMINAL SIZE (In.) | DIMENSIONS (In.) |       |            |            |
|--------------------|------------------|-------|------------|------------|
|                    | D                | H     | FHT        | MHT        |
| 3/4 FHT X 3/4 MHT  | 1.31"            | 1.96" | 3/4-11.5NH | 3/4-11.5NH |

| NOMENCLATURE AND MATERIALS |             |           |                               |      |               |
|----------------------------|-------------|-----------|-------------------------------|------|---------------|
| NO.                        | PARTS       | PARTS NO. | MATERIALS                     | QTY. | WATER CONTACT |
| 1                          | Packing     | Pack-R    | Rubber (NBR) SN-719F          | 1    | Y             |
| 2                          | Bolt        | Bat-K     | Brass Rod C37700              | 1    | N             |
| 3                          | Hose Bonnet | TPIHOS-K  | Brass Rod C46400              | 1    | Y             |
| 4                          | Packing     | Pack-P    | POM M90 FORMOCON FM090 CF500P | 1    | Y             |
| 5                          | Packing     | Pack-R    | Rubber (NBR) SN-719F          | 1    | Y             |
| 6                          | Middle Body | BDYTNG-K  | Brass Rod C46400              | 1    | Y             |
| 7                          | Washer      | RNG-K     | Forged Brass C26000           | 1    | Y             |
| 8                          | Packing     | Pack-R    | Rubber (NBR) SN-719F          | 1    | Y             |
| 9                          | Spring Seat | DDNPIR-P  | POM M90 FORMOCON FM090 CF500P | 1    | Y             |
| 10                         | Spring      | PIR-STS   | Stainless Steel 304           | 1    | Y             |
| 11                         | Hose Body   | BDYHOS-K  | Brass Rod C46400              | 1    | Y             |

| PROJECT         | APPROVAL STAMP                             |
|-----------------|--|
| PROJECT:        | <input type="checkbox"/> APPROVED          |
| ADDRESS:        | <input type="checkbox"/> APPROVED AS NOTED |
| ENGINEER:       | <input type="checkbox"/> NOT APPROVED      |
| SUBMITTAL DATA: | REMARKS:                                   |
| NOTES 1:        |  |
| NOTES 2:        |  |