

LANSDALE

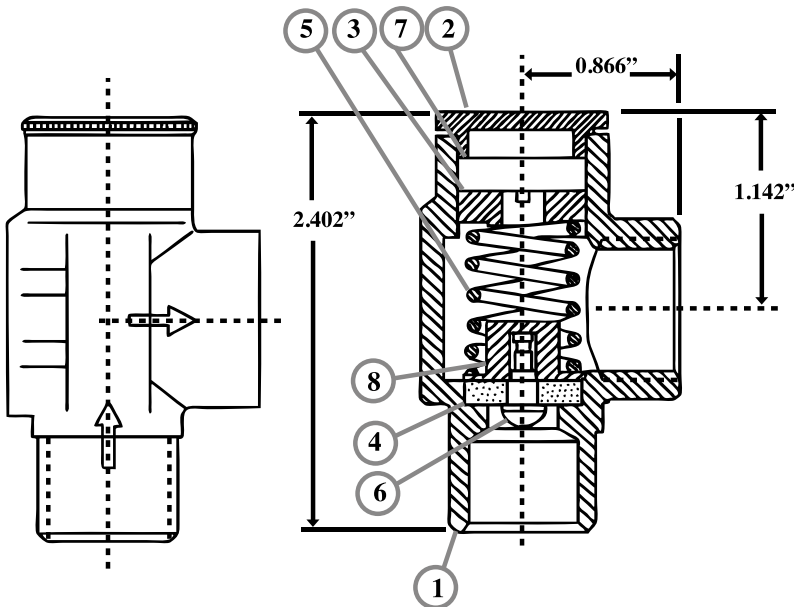
VALVE & MANUFACTURING

www.breccocorp.com

PRESSURE RELIEF VALVE



Used in grid and residential systems or where pressure relief is required. Set to 175 PSI



NO	MATERIAL
1 BODY	CAST BRASS
2 CAP	BRASS
3 ADJ CAP	BRASS
4 SEAL	RUBBER
5 SPRING	STAINLESS
6 SCREW	BRASS
7 WASHER	FIBRE
8 SEAL SEAT	BRASS

PROJECT INFORMATION		APPROVAL STAMP
Project:		<input type="checkbox"/> Approved
Address:		<input type="checkbox"/> Approved as noted
Contractor:		<input type="checkbox"/> Not approved
Engineer:		Remarks:
Submittal Data:		
Notes 1:		
Notes 2:		