

LANSDALE

VALVE & MANUFACTURING

BRECCO

1040 Broadway, Westville, NJ 08093

Toll Free: (800) 543-4194 • Fax: (602) 484-9248

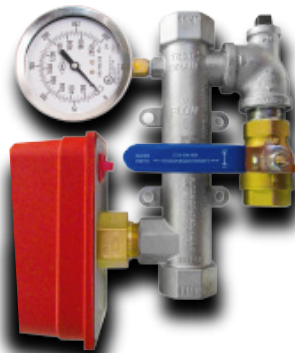
www.breccocorp.com

RESIDENTIAL RISER

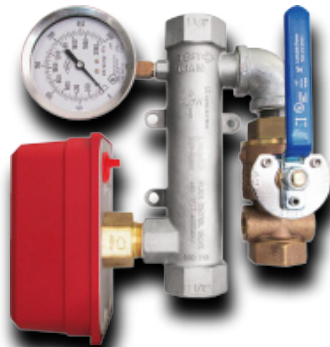
Features:

- Lead Free stainless steel body construction with all brass trim
- Factory assembled
- Factory pressure tested at 200psi (13.8 bar)
- NPT (female x female) connections
- Slim design allows for easy installation
- Optimum sensitivity is assured through a dedicated FM approved/UL and ULC Listed Water Flow Detector
- Choice of 3 kinds of trim:

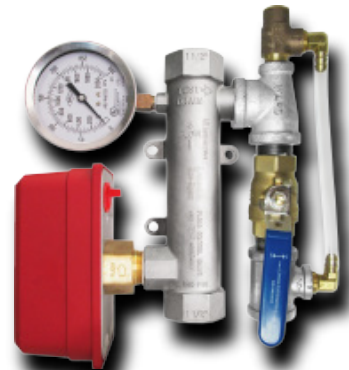
Basic Trim



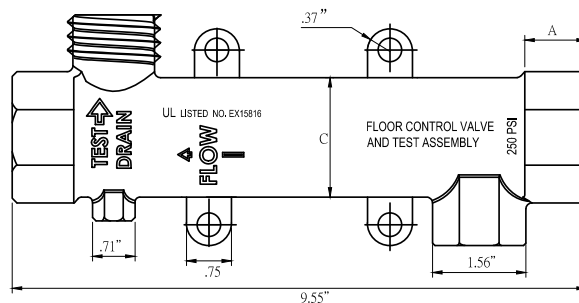
Basic Trim w/Test & Drain



Basic Trim w/Pressure Relief Kit



Size	Basic Trim	Basic Trim w/Test & Drain	Basic Trim w/Pressure Relief Kit
1"	650-375-00100	650-375-00280	650-375-00200
1¼"	650-375-00120	650-375-00740	650-375-00220
1½"	650-375-00160	650-375-00760	650-375-00240
2"	650-375-00180	650-375-00840	650-375-00260



Size	A
1"	.75"
1¼"	1.02"
1½"	1.02"
2"	1.02"

PROJECT INFORMATION	APPROVAL STAMP
Project:	<input type="checkbox"/> Approved
Address:	<input type="checkbox"/> Approved as noted
Contractor:	<input type="checkbox"/> Not approved
Engineer:	Remarks:
Submittal Data:	
Notes 1:	
Notes 2:	