

LANSDALE

VALVE & MANUFACTURING

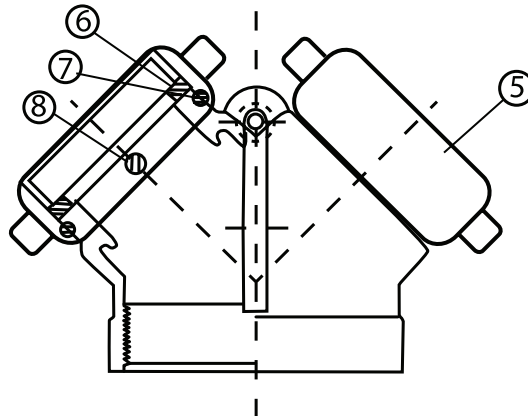
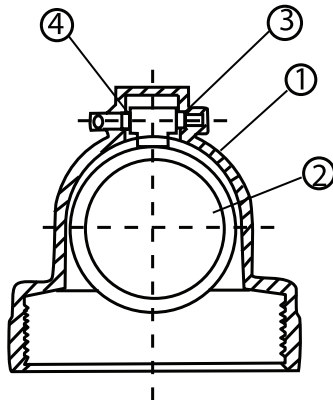
1040 Broadway Westville, NJ 08093 / Phone: (800)908-0523 / Fax: (856)456-9223 / www.gemfiresprinkler.com

SINGLE CLAPPER SIAMESE

4" x 2 1/2" x 2 1/2"



Fire Department Connection are all brass featuring single clapper design.



MATERIAL LIST

NUMBER	DESCRIPTION	MATERIAL
1	Straight Single Clapper Body	Brass
2	Clapper	Brass
3	Hinge Pin	
4	O-Ring	Vulcanized Rubber
5	House Coupling	Brass
6	Rubber Facing	Vulcanized Rubber
7	Ball Bearings	
8	Screw	Brass Rod

*UL/FM Listings under manufacturers
Wilson & Cousins or Ban Chang Hardware

PROJECT	APPROVAL STAMP
PROJECT:	<input type="checkbox"/> APPROVED
ADDRESS:	<input type="checkbox"/> APPROVED AS NOTED
ENGINEER:	<input type="checkbox"/> NOT APPROVED
SUBMITTAL DATA:	REMARKS:
NOTES 1:	
NOTES 2:	

Revision: 1/2019