



www.LansdaleValve.com

SINGLE CLAPPER SIAMESE

MODEL SC21S



4" x 2½" x 2½"

FEATURES:

Size: 4" IPS Outlet, (2) 2½" Inlets

Type: Straight Pattern

Material: B16 Brass*

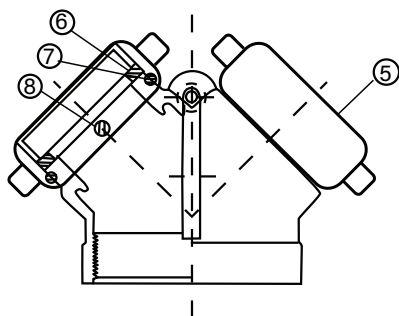
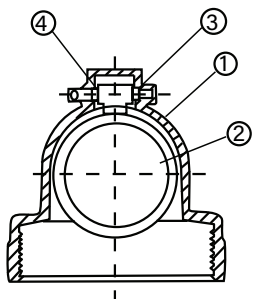
Finishes: Rough Brass Polished Chrome**

The Straight Pattern Fire Department Connection is UL Listed and FM Approved. Manufactured from solid brass* components to increase service life. The single clapper design features brass clapper and brass seats within a cast brass body. The 2½" inlets are pin lug design for ease of use and compatibility with local fire service districts. Swivel gaskets are included. Breakable caps or plugs should be installed to protect threads and prevent debris from being accidentally introduced into the water way.

INSTALLATION

Installation of the Fire Department Connection is achieved with readily available jobsite tools. Prior to installation make sure the proper identification sign has been installed on the nipple. Coat male threads of 4" IPS nipple liberally with a suitable pipe thread sealant such as PipeFit®. Tighten FDC one full turn past hand tight. Make sure FDC is aligned according to requirements.

*DO NOT OVER TIGHTEN. OVERTIGHTENING MAY CAUSE SEVERE STRETCHING AND POSSIBLE CRACKING OF THE OF THE FDC BODY.



MATERIAL LIST		
NUMBER	DESCRIPTION	MATERIAL
1	Straight Single Clapper Body	Brass
2	Clapper	Brass
3	Hinge Pin	
4	O-Ring	Vulcanized Rubber
5	House Coupling	Brass
6	Rubber Facing	Vulcanized Rubber
7	Ball Bearings	
8	Screw	Brass Rod

PROJECT	APPROVAL STAMP
PROJECT:	<input type="checkbox"/> APPROVED
ADDRESS:	<input type="checkbox"/> APPROVED AS NOTED
ENGINEER:	<input type="checkbox"/> NOT APPROVED
SUBMITTAL DATA:	REMARKS:
NOTES 1:	
NOTES 2:	