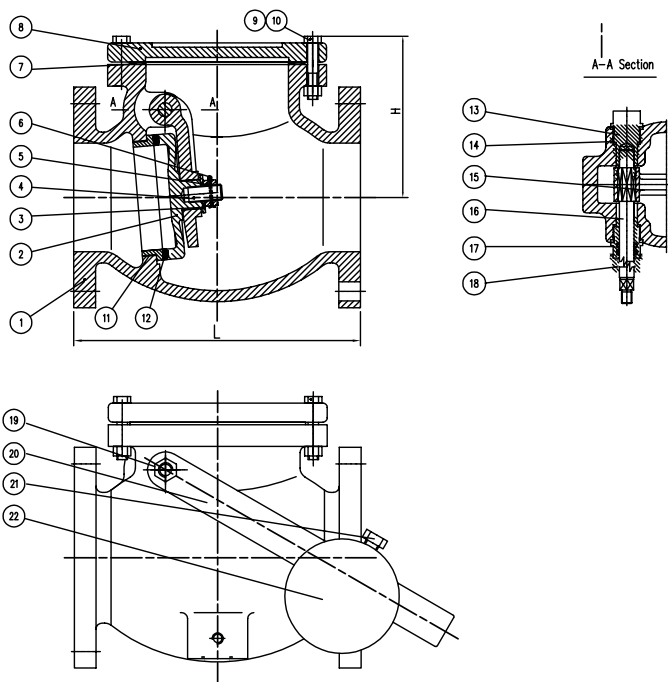


# SWING CHECK VALVE WITH LEVER & WEIGHT

## MODEL LVLWCV



- Resilient seated (EPDM rubber face on the ductile iron disc)
- Bronze seat ring
- “Full Waterway” design per AWWA C508 Standard
- Fusion bonded epoxy powder coated - certified to NSF/ANSI-61 for use in drinking water systems
- Fusion bonded epoxy coated Interior and exterior per AWWA C550 Standard
- Working pressure rated at 200 PSI
- Flanged ends to ANSI B16.1, Class 125
- Temperature range: 33° F to 170° F
- May be installed vertically or horizontally for vertical installations, flow must be in upward direction



DIMENSIONS (In.)									
SIZE	2	2.5	3	4	5	6	8	10	12
L	8	8.5	9.5	11.5	13	14	19.5	24.5	27.52
H	4.8	5.3	5.55	6.6	7.17	8.46	10.5	12	13.5

NO.	DESCRIPTION	MATERIAL
1	Body	Cast Iron, A126 Class B
2	Body Trim	Bronze, B62 C83600
3	Disc Trim	Rubber, EPDM
4	Disc	Cast Iron, A126 Class B
5	Hanger	Ductile Iron, A536, 65-42-12
6	Bonnet	Cast Iron, A126 Class B
7	Disc Spacer	Carbon Steel
8	Hanger Bolt	Stainless Steel, SS304
9	Hanger Nut	Stainless Steel, SS304
10	Cotter Pin	Stainless Steel, SS304
11	Plug	Brass
12	Spacer	PTFE
13	Bushing	Brass
14	Bushing	Brass
15	O-Ring	Rubber, EPDM
16	Stem	Stainless Steel, SS304
17	Stem Nut	Carbon Steel
18	Bolt	Carbon Steel
19	Gasket	Graphite
20	Lever	Carbon Steel
21	Bolt	Carbon Steel
22	Weight	ASTM A126 Class B

PROJECT		APPROVAL STAMP
PROJECT:		<input type="checkbox"/> APPROVED
ADDRESS:		<input type="checkbox"/> APPROVED AS NOTED
ENGINEER:		<input type="checkbox"/> NOT APPROVED
SUBMITTAL DATA:		REMARKS:
NOTES 1:		
NOTES 2:		