

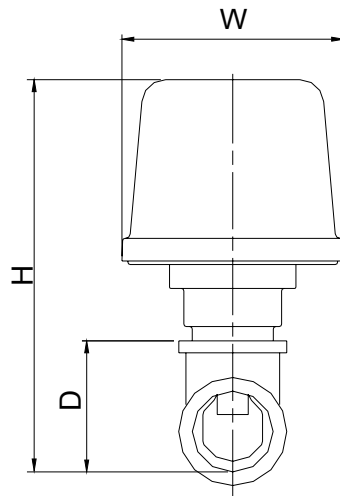
LVWFT

FEATURES:

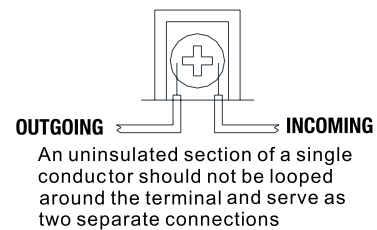
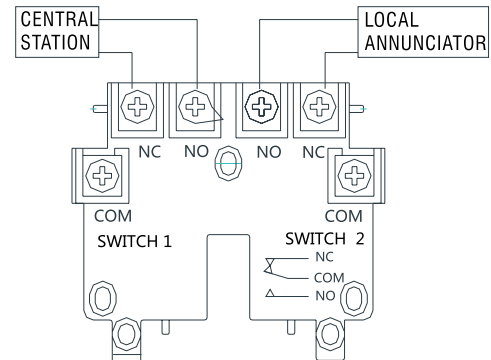
The Lansdale Valve & Manufacturing "System Detective" Waterflow switch is intended for use on Fire Sprinkler Systems. It is UL Listed and FM approved for steel pipe schedules 10 through 40 sizes 1"- 2".

- Designed for both indoor and outdoor use
- Can be mounted in a vertical or horizontal position
- Easy to adjust retard mechanism
- Plastic directional cover for easy inspection of direction of flow and added durability
- Equipped with tamper resistant screw to prevent unauthorized entry
- Two synchronized switches are enclosed in a durable terminal block
- Two openings for 1/2" conduit for easy wiring
- 450 PSI working pressure
- Operating temperature 32°F to 154°F
- Operational at a flow rate of 4-10 GPM
- Unit has 1" NPT threads and can be screwed into an outlet or tee

Dimensions (In.)				
Size	1	1-1/4	1-1/2	2
W	3.67	3.67	3.67	3.67
H	6.46	6.79	7.05	7.56
D (Depth)	2.12	2.46	2.71	3.22



TYPICAL CONNECTIONS



PROJECT	APPROVAL STAMP
PROJECT:	<input type="checkbox"/> APPROVED
ADDRESS:	<input type="checkbox"/> APPROVED AS NOTED
ENGINEER:	<input type="checkbox"/> NOT APPROVED
SUBMITTAL DATA:	REMARKS:
NOTES 1:	
NOTES 2:	