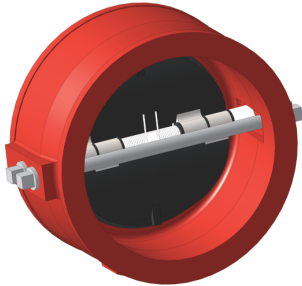


WAFER CHECK VALVE- DOUBLE DOOR

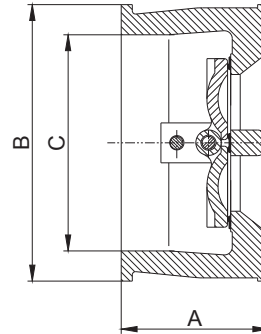
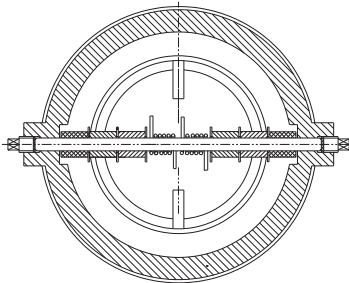
MODEL LVWCV-DD



FEATURES:



- Meet or exceed the requirements of UL312 and API 584 standard
- Spring loaded for fast closure
- Vertical or horizontal installation
- Resilient-seated for perfect tightness even at low differential pressure
- Excellent flow characteristics and low pressure losses at high flow rates
- Connection ends comply with ASME B16.1 Class 125 and ASME B16.5 Class 150 Flanges
- Rated working pressure-300 psi @ 32 F° to 189 F°
- UL 312/ULC Listed
- Fusion bonded coating interior and exterior meet or exceed all applicable of AWWA C550 standard



| MATERIAL SPECIFICATIONS | | |
|-------------------------|-----------------|---------------------|
| PART | MATERIAL | ASTM SPECIFICATIONS |
| Body | Ductile Iron | A536 Grade 65-45-12 |
| Body Seat Ring | Rubber | D2000 EPDM/NBR |
| Disc | Stainless Steel | A351 Grade CF8/CF8M |
| Hinge Pin | Stainless Steel | A276 Grade 416 |
| Spring | Stainless Steel | A276 Grade 304 |
| Stop Pin | Stainless Steel | A276 Grade 416 |
| Pin Retainer | Carbon Steel | A105 |

| MAIN DIMENSIONS (In) | | | | | |
|----------------------|------|------|-------|-------|-------|
| SIZE | 4 | 6 | 8 | 10 | 12 |
| A | 3.66 | 4.13 | 4.75 | 6.00 | 7.36 |
| B | 6.75 | 8.66 | 11.00 | 13.40 | 16.14 |
| C | 5.35 | 7.00 | 9.00 | 11.25 | 13.31 |

| PROJECT | APPROVAL STAMP |
|-----------------|--|
| PROJECT: | <input type="checkbox"/> APPROVED |
| ADDRESS: | <input type="checkbox"/> APPROVED AS NOTED |
| ENGINEER: | <input type="checkbox"/> NOT APPROVED |
| SUBMITTAL DATA: | REMARKS: |
| NOTES 1: | |
| NOTES 2: | |