

LANSDALE

VALVE & MANUFACTURING

1040 Broadway Westville, NJ 08093 / Phone: (800) 908-0523 / Fax: (856) 456-9223 / www.gemfiresprinkler.com

POLISHED BRASS

RECTANGULAR PLATE

FOR RECESSED STYLE F.D.C. WITH 2-1/2" NPS HOLES

15" (381mm) x 9" (229mm) brass rectangular plate used to identify and trim recessed fire department connections.

Various lettering options are available (see below).

This plate is intended to be used for connections having two (2) 2-1/2" NPS (DN65) connection points with centers spaced at 7" (177.8 mm).

FINISH:

Polished Brass

OPTIONS:

Chrome Plating

Stainless Steel Material

LETTERING AVAILABLE: :

Auto Sprinkler

Standpipe

Combination Auto Sprinkler/Standpipe

Pump Test

Wall Hydrant

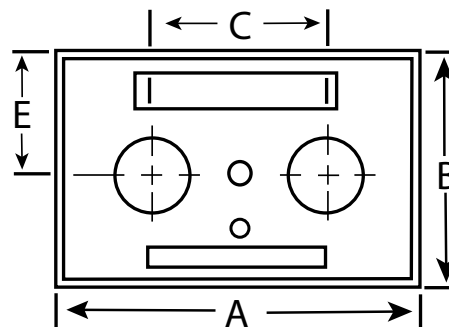
Gicleurs Auto

Canalisation d'Incendie

Borne Murale

Essai de Pompe

Gicleurs Auto/Canalisation



A: 15" (381 mm)
B: 9" (229 mm)
C: 7" (178 mm)

PROJECT	APPROVAL STAMP
PROJECT:	<input type="checkbox"/> APPROVED
ADDRESS:	<input type="checkbox"/> APPROVED AS NOTED
ENGINEER:	<input type="checkbox"/> NOT APPROVED
SUBMITTAL DATA:	REMARKS:
NOTES 1:	
NOTES 2:	

Revision: 1/2019