

LANSDALE

VALVE & MANUFACTURING

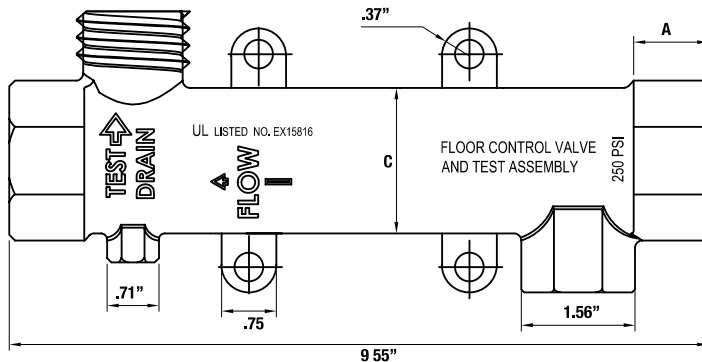
1040 Broadway Westville, NJ 08093 / Phone: (800) 908-0523 / Fax: (856) 456-9223 / www.gemfiresprinkler.com

RESIDENTIAL RISER



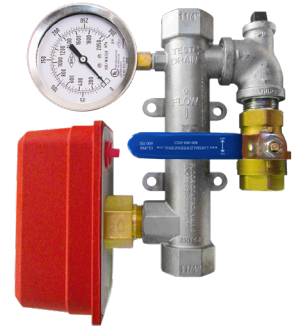
FEATURES:

- Lead Free stainless steel body construction with all brass trim
- Indoor/Outdoor use
- Factory pressure tested at 200 psi (13.8 bar)
- NPT (female x female) connections
- Slim design allows for easy installation
- Optimum sensitivity is assured through a dedicated FM Approved/UL and ULC Listed Water Flow Detector
- Choice of 3 kinds of trim

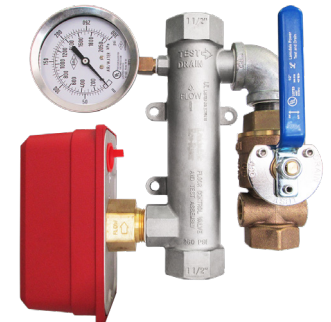


SIZE	A
1"	.75"
1 1/4"	1.02"
1 1/2"	1.02"
2"	1.02"

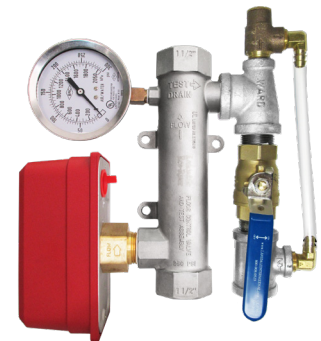
Basic Trim



Basic Trim w/Test & Drain



Basic Trim w/Pressure Relief Kit



SIZE	BASIC TRIM	BASIC TRIM W/TEST & DRAIN	BASIC TRIM W/PRESSURE RELIEF KIT
1"	650-375-00100	650-375-00280	650-375-00200
1 1/4"	650-375-00120	650-375-00740	650-375-00220
1 1/2"	650-375-00160	650-375-00760	650-375-00240
2"	650-375-00180	650-375-00840	650-375-00260

PROJECT		APPROVAL STAMP
PROJECT:		<input type="checkbox"/> APPROVED
ADDRESS:		<input type="checkbox"/> APPROVED AS NOTED
ENGINEER:		<input type="checkbox"/> NOT APPROVED
SUBMITTAL DATA:		REMARKS:
NOTES 1:		
NOTES 2:		

Revision: 1/2019