

EYE/TIE BOLT

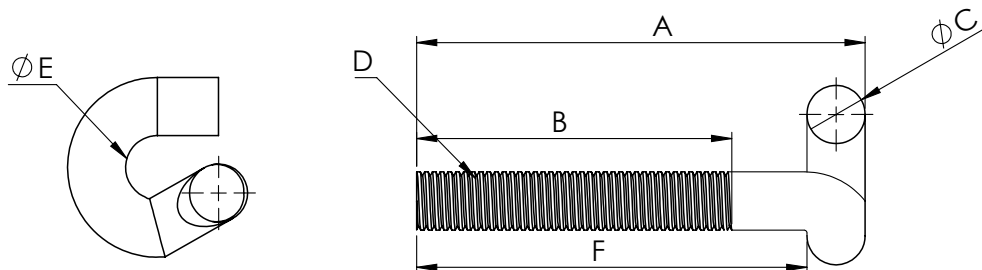
MODEL LVEBB, LVEBSS304, LVEBSS316



DESCRIPTION:

The Lansdale Eye Bolt, Models - LVEBB, LVEBSS304 & 316 are used in place of a T-head bolt. The 3/4" threaded rod passes through the eye and is retained with a heavy hex nut, which is sold separately.

- Material: High strength, low alloy steel; type 304 & 316 stainless steel available (see chart below for availability)
- Meets ASTM A588 Grade A, 45,000 PSI yield strength min. and AWWA C111



EYE BOLT DIMENSIONS (in.)									
SIZE (in.)	A	B	ØC	D	ØE	F	STEEL	SS304	SS316
5/8 x 3.5	4.25	2.59	0.55	5/8-11UNC	0.75	3.70	•		
5/8 x 4	4.64	2.75	0.55	5/8-11UNC	0.75	4.02	•		
5/8 x 4.5	5.07	2.79	0.55	5/8-11UNC	0.75	4.52	•		
3/4 x 4	5.20	3.07	0.67	3/4-10UNC	0.81	4.33	•	•	•
3/4 x 4.5	5.36	3.62	0.67	3/4-10UNC	0.81	4.68	•	•	
3/4 x 5	5.78	3.93	0.67	3/4-10UNC	0.81	5.08	•		

PROJECT	APPROVAL STAMP
PROJECT:	<input type="checkbox"/> APPROVED
ADDRESS:	<input type="checkbox"/> APPROVED AS NOTED
ENGINEER:	<input type="checkbox"/> NOT APPROVED
SUBMITTAL DATA:	REMARKS:
NOTES 1:	
NOTES 2:	